

2021



TCI Re-envisioning Study: Brigham City Community Report



College of Humanities & Social Sciences
Transforming Communities Institute
UtahStateUniversity.



About the TCI Re-envisioning Study

Transforming Communities Initiative, now known as Transforming Communities Institute (TCI), was founded in 2014 by faculty in the Department of Social Work at Utah State University. TCI aimed to conduct research in and for the community while teaching the next generation of social work leaders to be data-driven and civically engaged.

After several years of successful projects and changes in Utah communities, a need existed to re-examine the mission and strategy of TCI. Recently, TCI faculty leadership petitioned USU to advance from an initiative to an institute, with confirmation in February 2022. As part of this growth process, TCI was reimagined through a community-engaged research project to ensure relevancy and maximum impact in Utah communities.

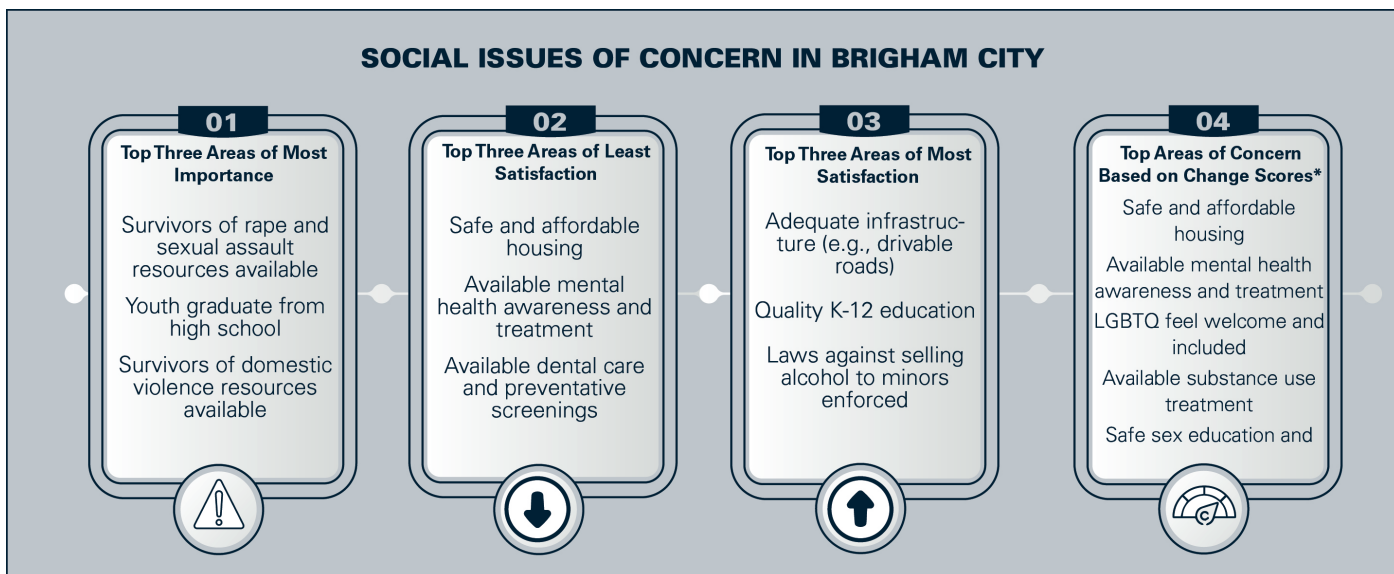
The project was a mixed-methods study that sought to understand 1) the social challenges and resources of Utah communities and 2) ways in which TCI may integrate more fully into communities to meet their needs and expand on their strengths. Survey and focus group data were collected from community decision makers and non-profit leaders who work in Blanding, Brigham City, Logan, Moab, Price, Tooele, and Uintah Basin. The present report shares the survey and focus group findings from the Brigham City area.

Survey Findings

The Brigham City area had 16 responses from Community Decision Makers and 7 responses from Nonprofit respondents. The mean age of Decision Maker participants was 50.69 (SD= 9.64), while the mean age for Nonprofit participants was 46.00 (SD=7.68). The mean time working in the community for both groups was over 20 years. The majority of participants in both groups were female (56.3%), and over 85% of both groups identified as white. Over 75% of all respondents had a college degree or above. For yearly household income for Decision Maker respondents, the highest percentage (43.8%) reported earning \$100,000+ with \$50,000-\$74,999 close behind (37.5%). For Nonprofits respondents, over 42% reported a total household income of \$100,000 or greater.

For Decision Makers, 78.6% of participants either somewhat agreed or strongly agreed that community members have a strong voice in their community, whereas 60% of Nonprofit respondents selected the same. Most (85.7%) of Decision Maker participants and all of Nonprofit respondents somewhat agreed or strongly agreed that they see Utah State University as an asset and resource in the community. When asked if they feel connected to the Utah State University campus in their community, but 71.5% of Decision Makers reported feeling "Somewhat connected" or "Very connected;" however, only 40% of Nonprofit respondents selected the same.

SOCIAL ISSUES OF CONCERN IN BRIGHAM CITY

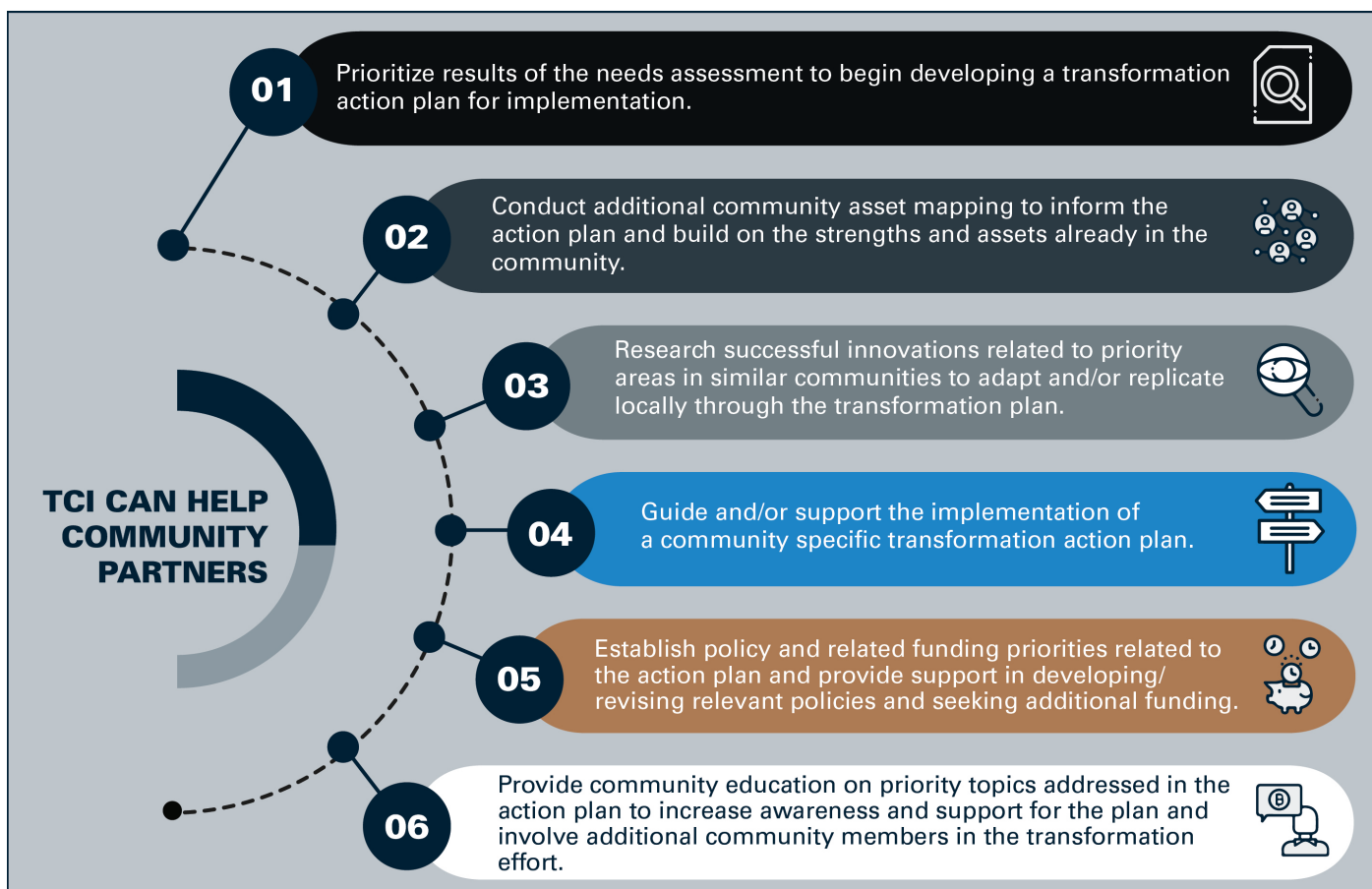


*subtracting the overall satisfaction score from the importance scores



How TCI Can Help

At TCI, we are committed to working with and supporting our community partners through all stages of transformation. This includes working with key stakeholders from initial assessment to implementation of innovative ideas, all the way through to evaluating transformation outcomes. We are interested in providing our community partners with actionable suggestions on how they might apply the results of the most current round of community assessments to advance transformation activities at the local level. Below are several ways that TCI can support key stakeholders to build on the results of this report to cultivate change in their communities:



As community partners consider the next steps for their communities to take in creating meaningful change, TCI is ready to collaborate intentionally and effectively to improve community-identified key outcomes. Together, we can build vibrant, strong, resilient, and inclusive communities where all Utahns can thrive.

To read the full report of the TCI Re-envisioning study, please visit:

<https://chass.usu.edu/social-work/transforming-communities-institute/>

To connect with TCI, reach out to our director, Dr. Jayme Walters, at jayme.walters@usu.edu or 435-797-7693.